



Board of Visitors Dashboard

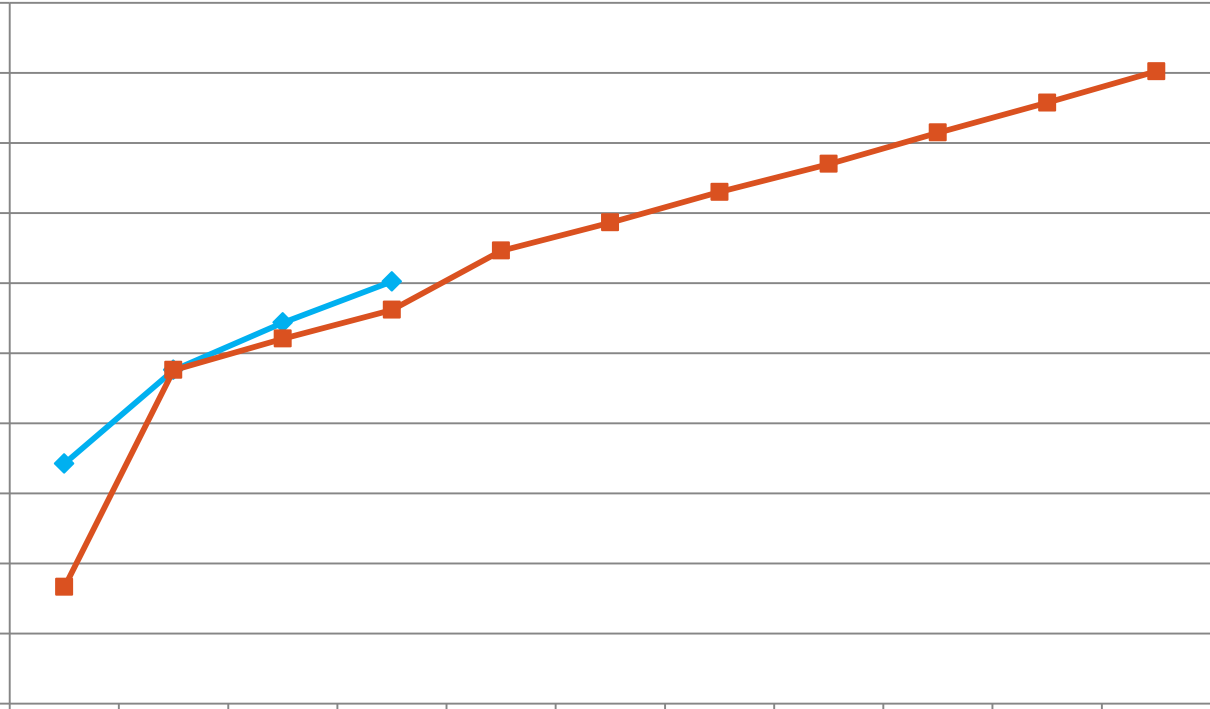
September 26, 2013



Headcount by Level



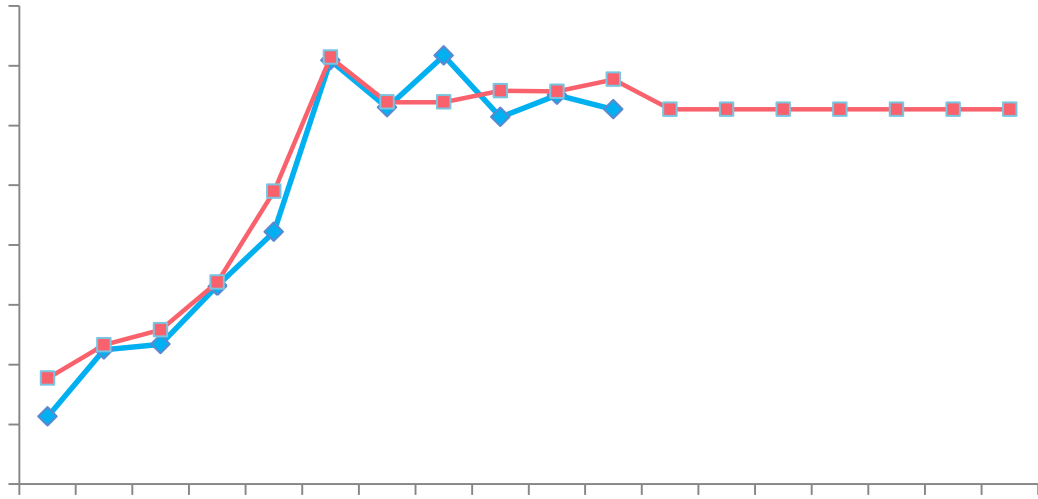
In-State Undergraduate Headcount



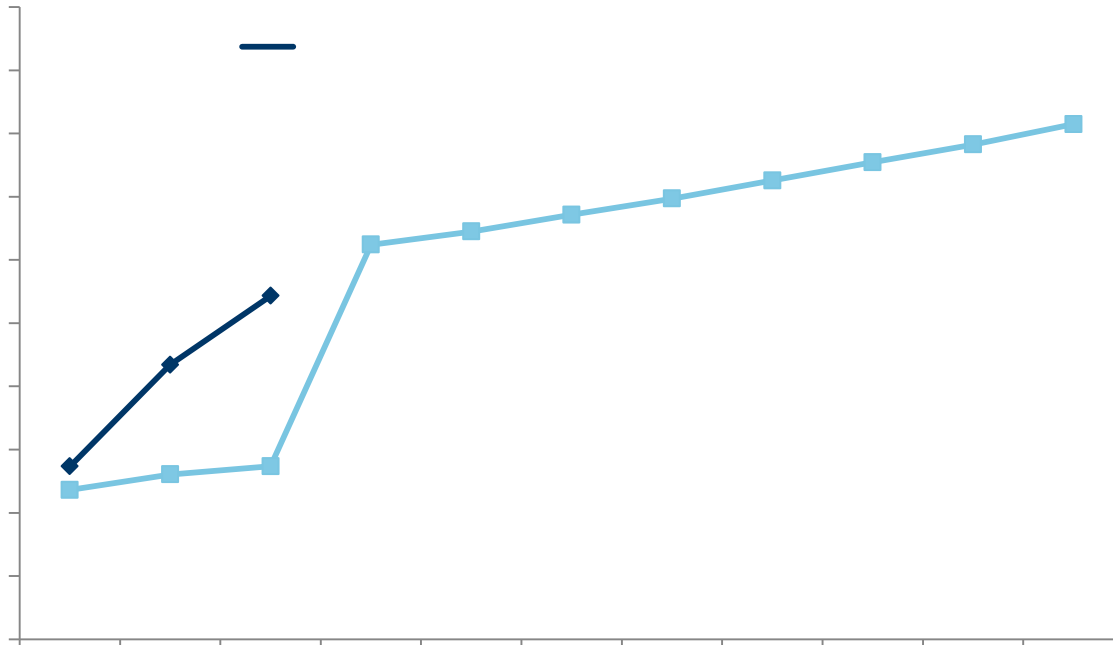
Notes: Headcount trends track progression toward achieving enrollment goals. The trend comparisons provide insight for the likelihood of meeting goals.

Meets 95% of SCHEV-approved biennial enrollment projections for in-state undergraduate HC enrollment





Annual In-State Undergraduate Upper Level FTE



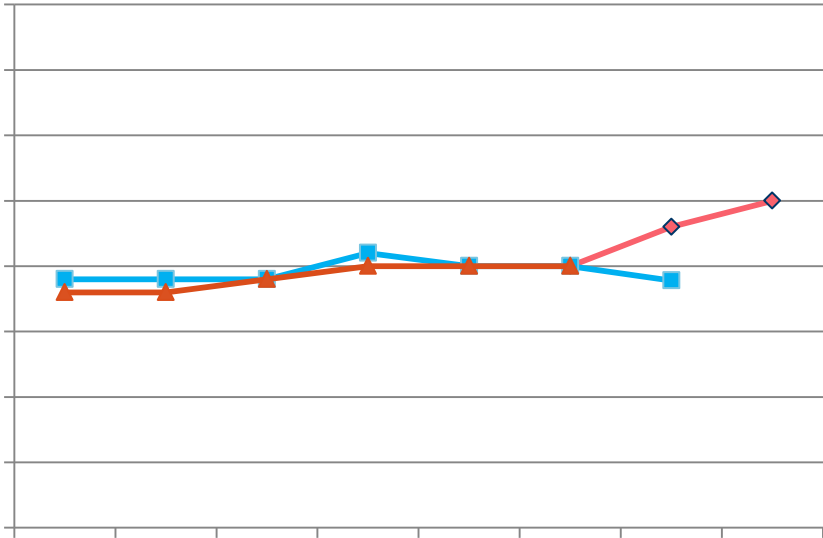
Notes: Meets 95% of SCHEV-approved biennial enrollment projections for Upper Level FTEs

Freshman Retention



Notes:

Six-Year Graduation Rate



Notes:

Total Degrees Conferred



Notes:



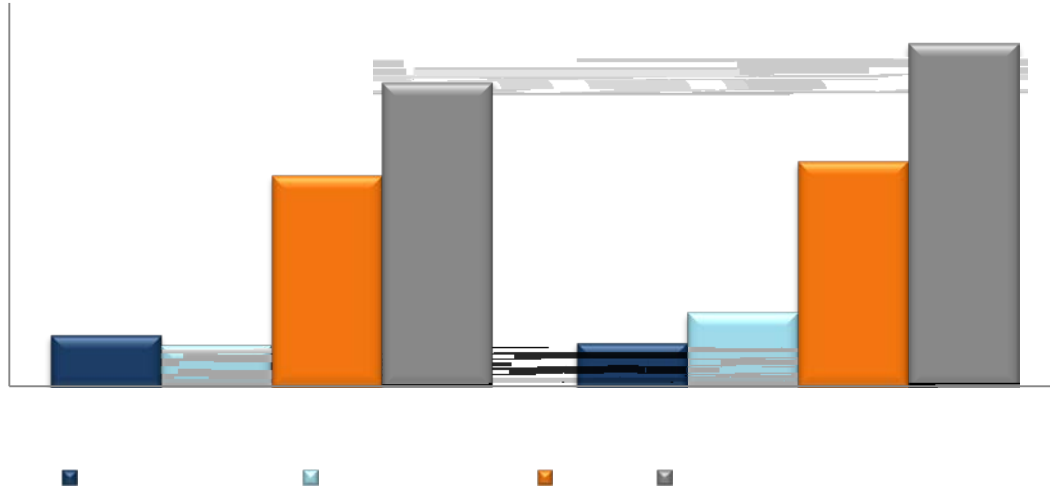
Commonwealth Performance Standards



	Standard	In Compliance	Not in Compliance
Pass			

Notes:

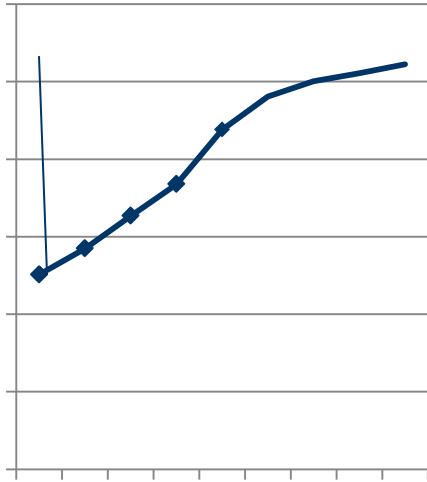
SWaM Performance



Notes:



Total Expenditure:





Jeanne Clery Disclosure



*Jeanne Clery Disclosure of Campus Security Policy and
Campus Crime Statistics Act (Clery Act).*



Total Giving



Foundation	FY 2012	FY 2013	FY-YTD 2014	Goal	Progress

Planned Giving: Educational and Athletic Foundation



FY 2012	FY 2013	FY-YTD 2014	Goal	Progress
		\$0		0%

Notes:

Annual Giving: Educational and Athletic Foundations



Solicitation Type	FY 2012	FY 2013	FY-YTD 2014	Goal	Progress
Total			\$3,947,274		46%

Notes:

Donor Counts



Foundation	FY 2012	FY 2013	FY-YTD 2014	Goal	Progress
Total			568		6%

Notes:







